

Portland Walk **Barrow-in-Furness**

**ONE OF THE NORTH-  
WEST'S LARGEST OPEN-AIR  
SHOPPING CENTRES**

Situated in Cumbria, Portland Walk is a modern pedestrianised shopping area linking Dalton Road to the Town Hall and entertainment district.

A 500 space multi-storey car park provides direct access to the centre, and Barrow-in-Furness train station is 500 yards away.



**35**  
retail units



**14 miles**  
to the Lake District  
National Park

**Anchor Stores**

DEBENHAMS  
NEW LOOK



WHSmith



**106,000**  
population of  
catchment area



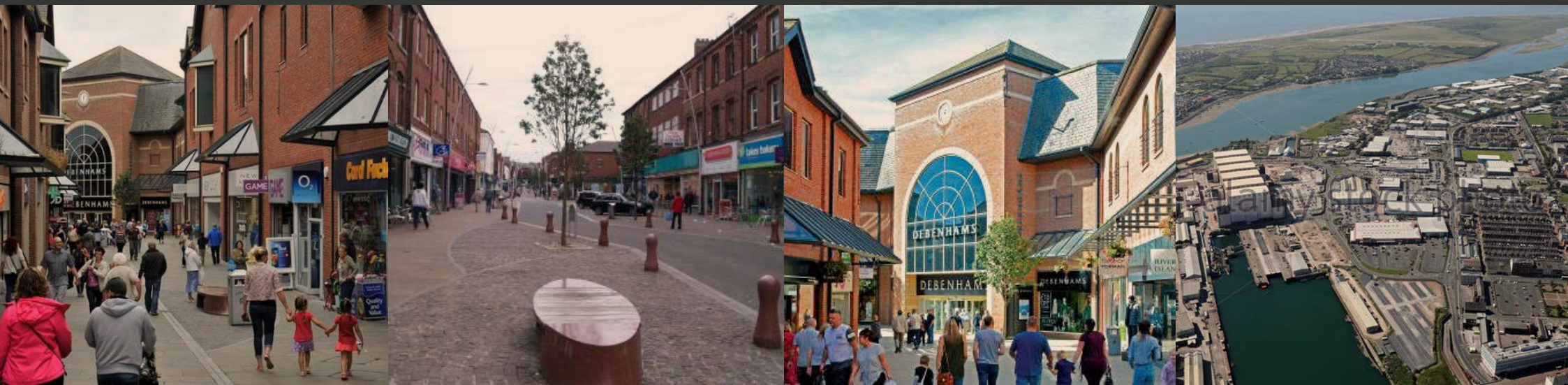
**200,000**  
sqft

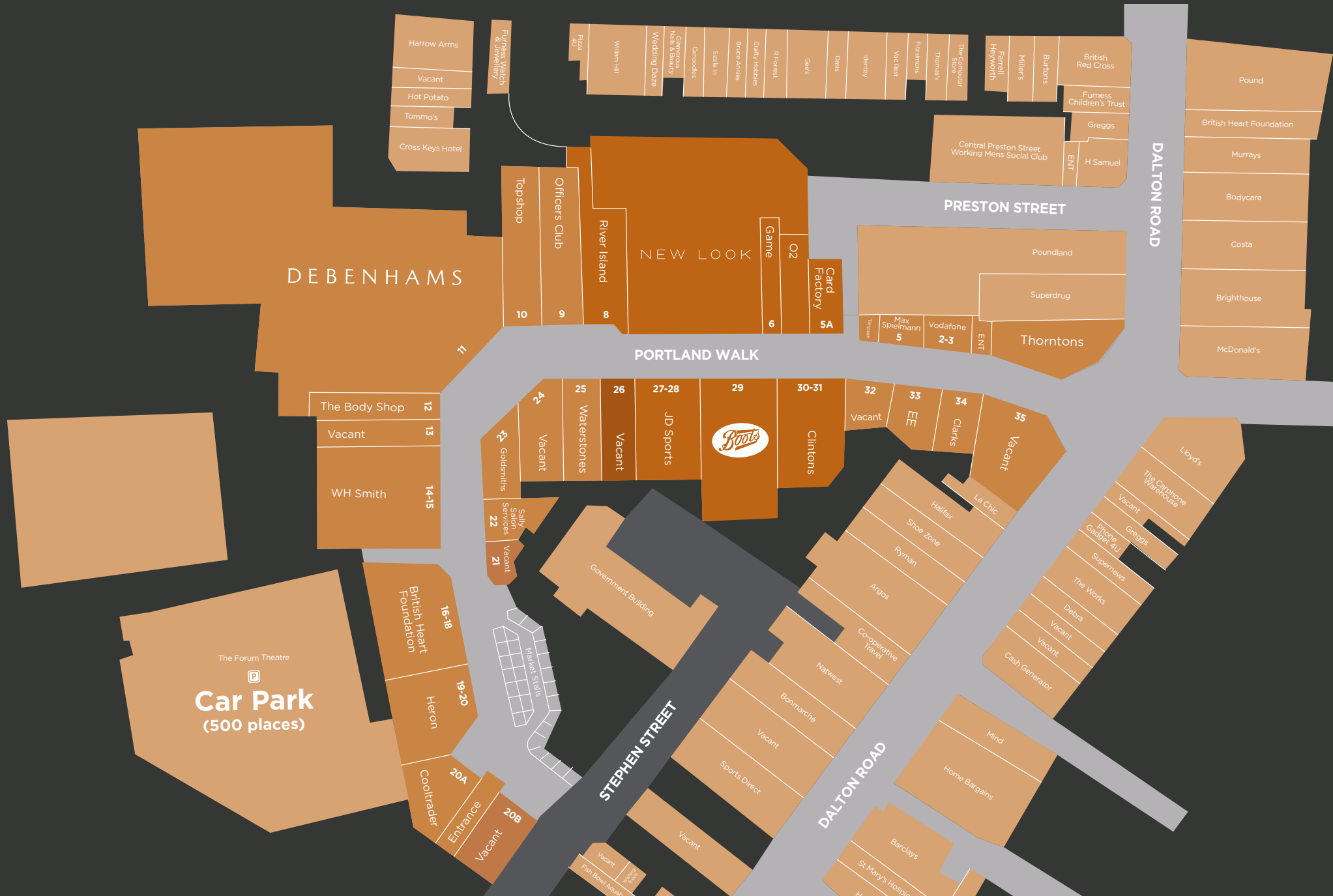


**2nd largest**  
urban area in Cumbria,  
after Carlisle



**£272m**  
contract awarded to  
BAE Shipyards to  
design Vanguard Class  
Submarine replacement





## Contact

### Global Mutual

#### Beverly Parker

**T** +44 (0)20 3745 6274

**M** +44 (0)7748 320 404

**E** [bp@globalmutual.com](mailto:bp@globalmutual.com)

### Bradys

#### John Brady

**T** +44 (0)161 839 1213

**M** +44 (0)7836 787 740

**E** [john@bradys.co.uk](mailto:john@bradys.co.uk)